



Morecambe Offshore Windfarm: Generation Assets Environmental Statement

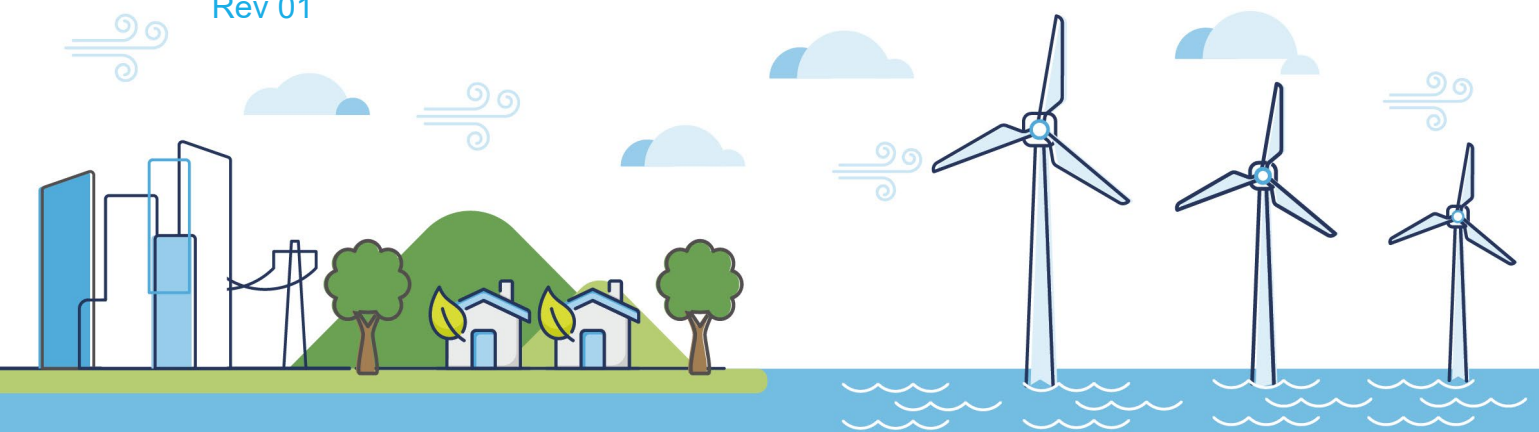
Volume 5

Chapter 18 SLVIA Figures (Part 32 of 34)

PINS Document Reference: 5.3.18.32

APFP Regulation: 5(2)(a)

Rev 01



Document History

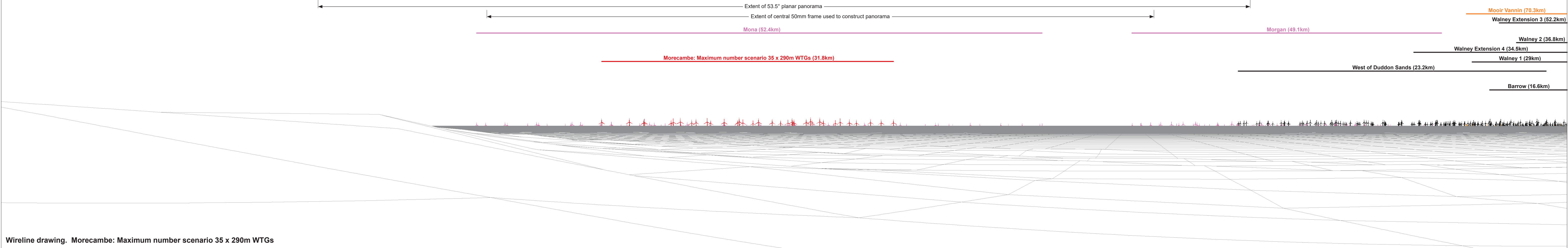
Doc No	MOR001-FLO-CON-ENV-FIG-1180	Rev	01
Alt Doc No	PC1165-RHD-ES-XX-DG-Z-0018		
Document Status	Approved for Use	Doc Date	May 2024
PINS Doc Ref	5.3.18.32	APFP Ref	5(2)(a)

Rev	Date	Doc Status	Originator	Reviewer	Approver	Modifications
01	May 2024	Approved for Use	Royal HaskoningDHV	Morecambe Offshore Windfarm Ltd	Morecambe Offshore Windfarm Ltd	n/a



Baseline photograph

This image provides landscape and visual context only



Wireline drawing. Morecambe: Maximum number scenario 35 x 290m WTGs

OS reference:	331492 E 447929 N	Horizontal field of view:	90° (cylindrical projection)	Camera:	Canon EOS 6D
Eye level:	8.2 m AOD	Principal distance	522 mm	Lens:	EF50mm f/1.4 USM
Direction of view:	250°			Camera height:	1.5 m AGL
Nearest turbine:	31.8 km			Date and time:	19/04/2022, 14:05

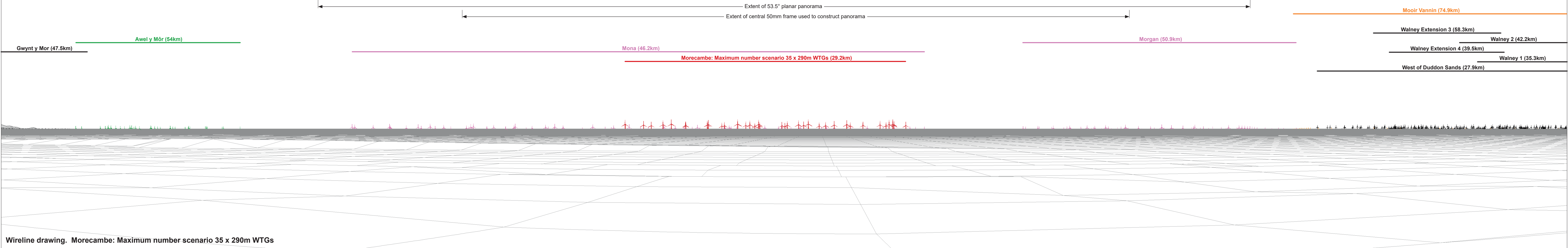
Figure: 18:55
Viewpoint 8: Fleetwood (Rossall Point)

© Crown copyright and database rights (2024) Ordnance Survey 0100031673.



Baseline photograph

This image provides landscape and visual context only



OS reference:	330552 E 435677 N	Horizontal field of view:	90° (cylindrical projection)	Camera:	Canon EOS 6D
Eye level:	7.55 m AOD	Principal distance:	522 mm	Lens:	EF50mm f/1.4 USM
Direction of view:	268°			Camera height:	1.5 m AGL
Nearest turbine:	29.2 km			Date and time:	20/04/2022, 08:59

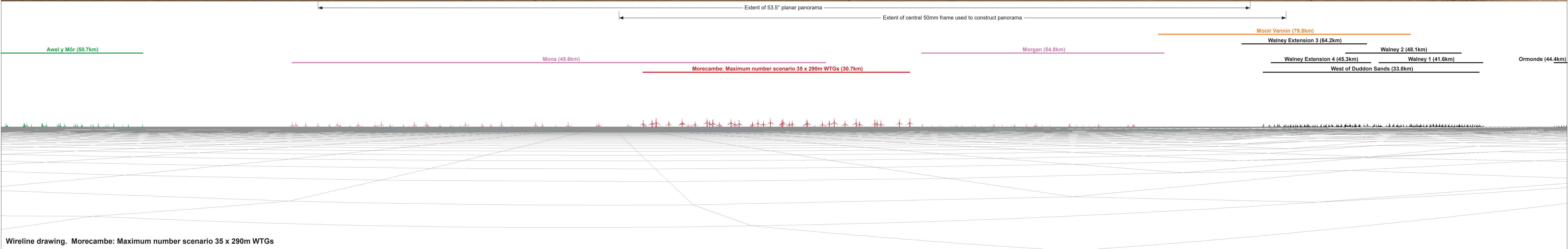
Figure: 18:56
Viewpoint 9: Blackpool (near Tower)

© Crown copyright and database rights (2024) Ordnance Survey 0100031673.



Baseline photograph

This image provides landscape and visual context only

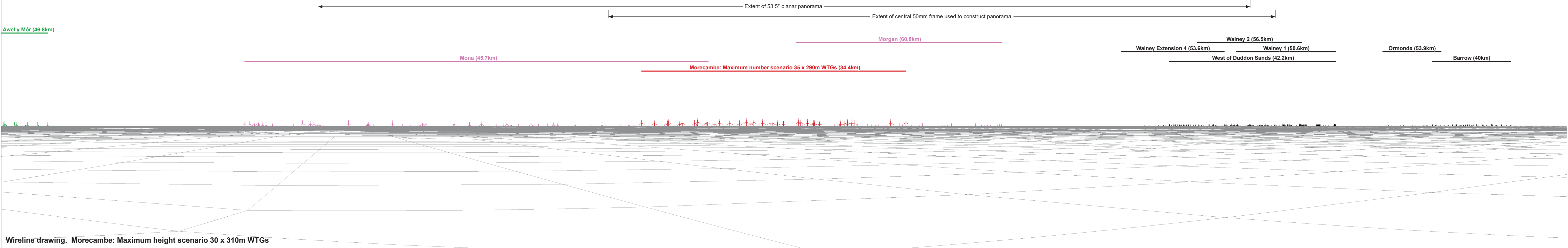


OS reference:	331948 E 428356 N	Horizontal field of view:	90° (cylindrical projection)	Camera:	Canon EOS 6D	Figure: 18:57 Viewpoint 10: Lytham St Anne's
Eye level:	7.83 m AOD	Principal distance:	522 mm	Lens:	EF50mm f/1.4 USM	
Direction of view:	280°			Camera height:	1.5 m AGL	
Nearest turbine:	30.7 km			Date and time:	20/04/2022, 07:53	



Baseline photograph

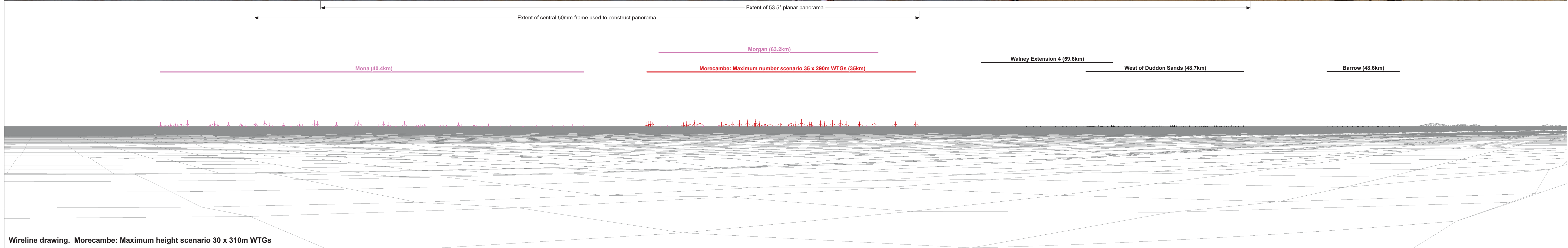
This image provides landscape and visual context only



Wireline drawing. Morecambe: Maximum height scenario 30 x 310m WTGs

OS reference:	333109 E 417985 N	Horizontal field of view:	90° (cylindrical projection)	Camera:	Canon EOS 6D
Eye level:	8.24 m AOD	Principal distance:	522 mm	Lens:	EF50mm f/1.4 USM
Direction of view:	295°			Camera height:	1.5 m AGL
Nearest turbine:	34.4 km			Date and time:	20/04/2022, 11:42

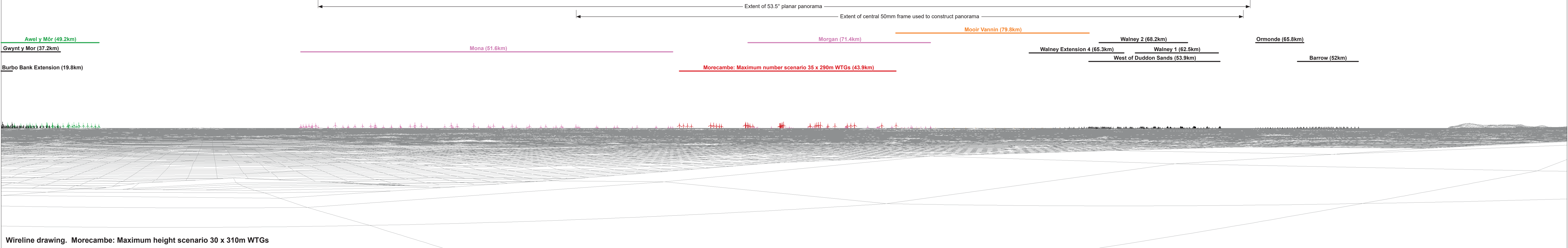
Figure: 18:58
Viewpoint 11: Southport Pier
 © Crown copyright and database rights (2024) Ordnance Survey 0100031673.



Wireline drawing. Morecambe: Maximum height scenario 30 x 310m WTGs

OS reference:	327005 E 406706 N	Horizontal field of view:	90° (cylindrical projection)	Camera:	Canon EOS 6D
Eye level:	10.12 m AOD	Principal distance	522 mm	Lens:	EF50mm f/1.4 USM
Direction of view:	313°			Camera height:	1.5 m AGL
Nearest turbine:	35 km			Date and time:	20/04/2022, 13:15

Figure: 18:59
Viewpoint 12: Formby Point



OS reference:	338451 E 407315 N	Horizontal field of view:	90° (cylindrical projection)	Camera:	Canon EOS 5D Mark II
Eye level:	58.16 m AOD	Principal distance	522 mm	Lens:	EF50mm f/1.4 USM
Direction of view:	303°			Camera height:	1.5 m AGL
Nearest turbine:	43.9 km			Date and time:	08/08/2022, 13:15

Figure: 18:60
Viewpoint 13: Clieves Hill